

# NH/NT Fuses NH/NT熔断器

NH(NT) Fuses - Size 00C, 00, 0, 1C, 1, 2C, 2, 3C, 3, 4



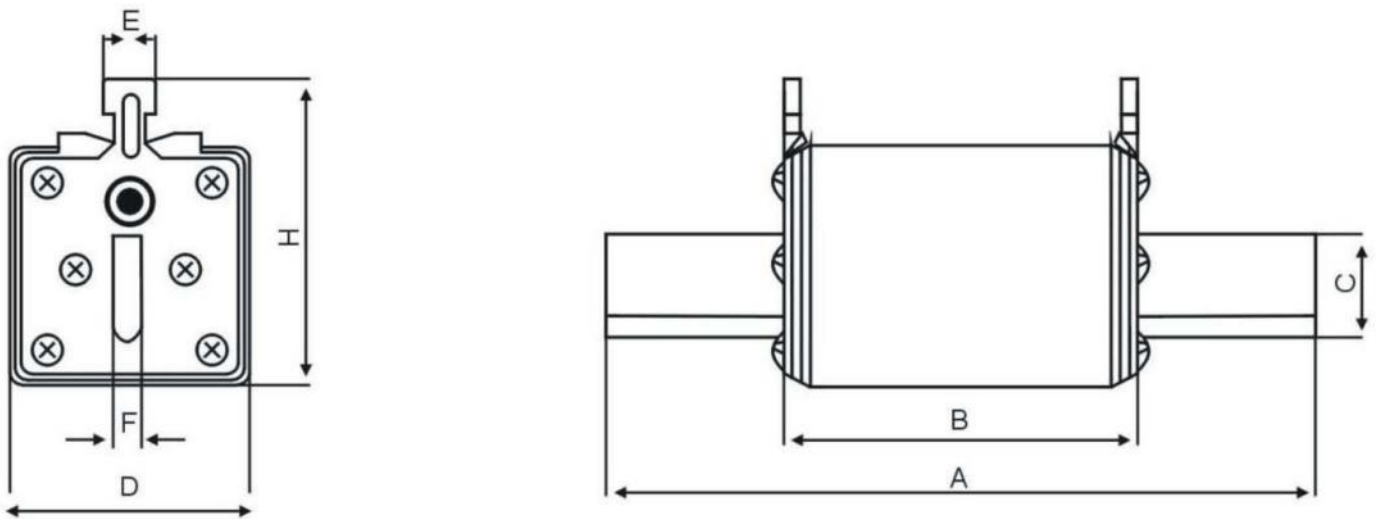
Description: Low power loss NH(NT) fuses & fuse bases for industrial protection, conform to Class GL/GG and ClassaM. General industrial applications or for the protection of motor circuits. Version with voltage free metal gripping lugs for insulated fuses. Light yellow ceramic available.

Ratings 电压和分断电流:  
 Volt: - 400V ac, 500V ac, 690V ac  
 Ir: - 120kA - 400V ac  
 Ir: - 120kA - 500V ac  
 Ir: - 50kA - 690V ac

Standards 标准:  
 IEC 60269-1, IEC 60269-2, GB13539

产品概述:  
 低功耗、高分断NH/NT熔断器符合gL/g和aM等级，通用于工业保护或电机保护，陶瓷颜色可以是黄色或白色。

安装尺寸 Dimensions in mm



规格 Size	电流 In (A)	A	B	C	D	E	F	H
000	6, 10, 16, 20, 25, 32, 40, 50, 63, 80, 100	78.5	49.5	15	21	10	6	48
00	10, 16, 20, 25, 32, 40, 50, 63, 80, 100, 125, 160	78.5	50	15	30	10	6	56
0	20, 25, 32, 40, 50, 63, 80, 100, 125, 160	125	66	15	30	10	6	56
1C	20, 25, 32, 40, 50, 63, 80, 100, 125, 160	135	66	15	30	10	6	56
1	32, 40, 50, 63, 80, 100, 125, 160, 200, 250	135	65	20	48	10	6	62
2C	50, 63, 80, 100, 125, 160, 200, 250	150	65	20	48	10	6	62
2	63, 80, 100, 125, 160, 200, 250, 315, 355, 400	150	67	25	58	10	6	71.5
3C	160, 200, 250, 315, 355, 400	150	67	25	58	10	6	71.5
3	315, 355, 400, 500, 630	150	68	32	67	10	6	84
4	630, 800, 1000, 1250, 1600	200	83	50	88	10	6	112

# HRC Low voltage fuses square type NT/NH底座

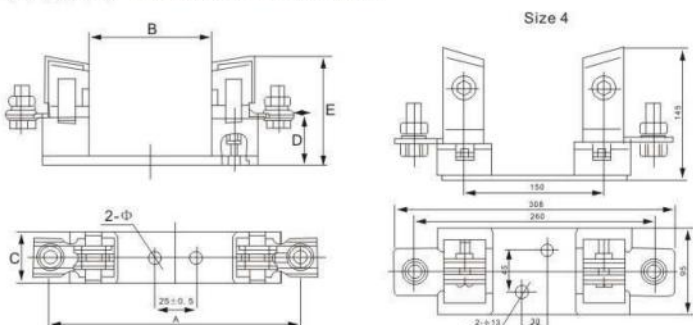
Size 00, 0, 1, 2, 3 Steel Type



Size 00, 0, 1, 2, 3

Description: NH(NT) Fuse bases, insulation material DMC or ceramic for knife fuse-links  
 产品概述:  
 本系列熔断器底座配NH/NT方形熔断器实用, 绝缘材料可以是DMC或陶瓷。  
 Ratings 电压和电流  
 Voltages: – up to 690V ac  
 Amps: – 2 – 1250A  
 Applications: Protection of industrial circuits and electrical apparatus  
 用于工业电路和仪器仪表等。  
 Standards 标准  
 IEC 60269, GB13539

安装尺寸 Dimensions in mm

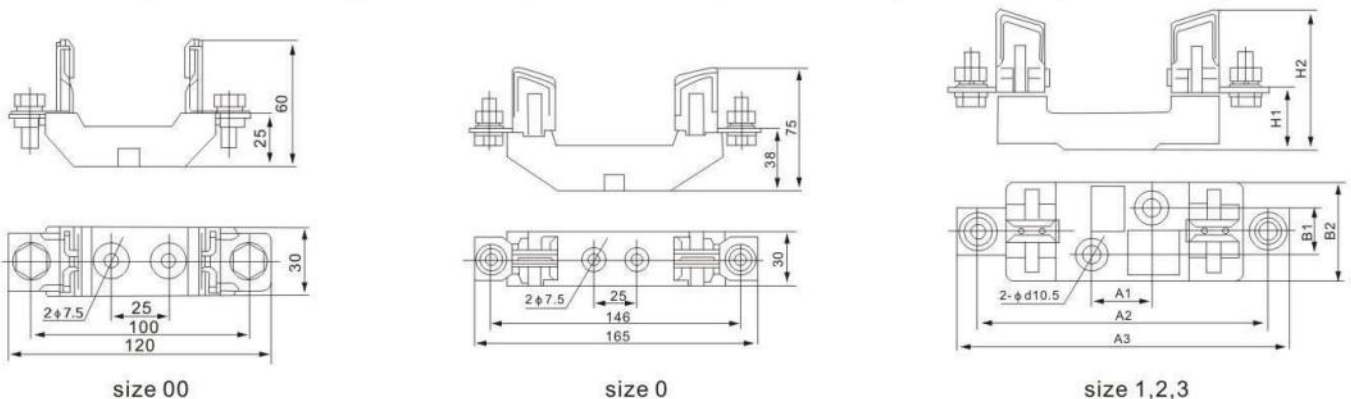


规格 Size	额定电流 Current	Dimensions in mm 尺寸毫米				
		A	B	C	D	E
00	160	100 ± 1.5	56.5 ± 1.5			
0	160	150 ± 1.5	74 ± 3	32	34	71
1	250	175 ± 1.5	80 ± 3	57	39	87
2	400	200 ± 1.5	80 ± 3	57	40	100
3	630	210 ± 1.5	80 ± 3	57	41	105



Size 00, 0, 1, 2, 3, 4

规格 Size	Dimensions in mm 尺寸毫米						
	A1	A2	A3	B1	B2	H1	H2
1	25	171	197	26	58	38	84
2	25	200	223	30	60	38	100
3	25	210	250	40	60	40	105
4	30	265	310	45	95	48	150



size 00

size 0

size 1,2,3

# Cylindrical Fuse System 圆柱形熔断器和底座

## Modular Fuse Holders for Cylindrical Fuse-links

Description: Fuse Holder for cylindrical fuses. Secured to DIN rail and available with and without light indicator for active fuse function. Multi-phase connection accessories are available.

配圆柱形熔断器用，导轨安装，有带指示器和不带指示器的，可以是单P或多P。Ratings 电压和电流：Volts: - AC 220、- 690V、- DC 24V.

Applications: Protection of electrical distribution circuits and electrical appliances.

用于电路保护和电器保护。

Standard标准: IEC 60269-3, IEC60947



RT18M-32(X)



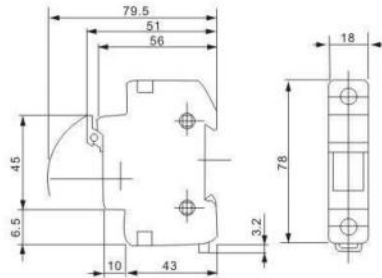
RT18M-63(X)



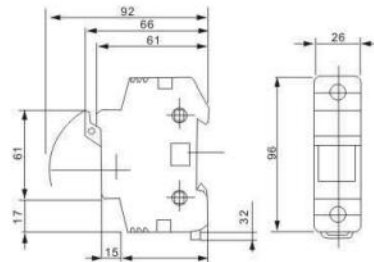
RT18M-125

规格 Size	Poles	No of Mddules	Without Indicator	With Indicator	Unit Packing
10 × 38	Neutral	1	RT18M-32N RT18M-32	RT18M-32XN RT18M-32X	12
	1P	1			12
	1P+N	2			6
	2P	2			6
	3P	3			4
	3P+N	4			3
14 × 51	Neutral	1	RT18M-63N RT18M-63	RT18M-63XN RT18M-63X	6
	1P	1			6
	1P+N	2			3
	2P	2			3
22 × 58	Neutral	1	RT18L-125N RT18L-125		6
	1P	1			6
	1P+N	2			3
	2P	3			2

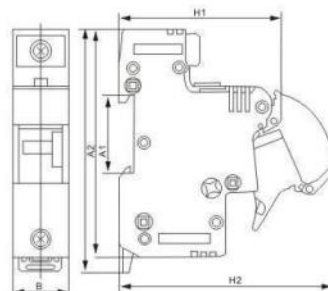
RT18M-32(X) Size: 10 × 38 Amps: 0.5 – 32A



RT18M-63(X) Size: 14 × 51 Amps: 2 – 63A



RT18M-125 Size: 22 × 58 Amps: 0.5 – 125A





# Cylindrical Fuse System 圆柱形熔断器和底座



## Photovoltaic Fcse 太阳能光伏系统保护用熔断器

Size 10 x 38

Glass: gPV

Size: 10x38

Applications: Protection of photovoltaic modules in Solar Generator System and photovoltaic array.

用于保护太阳能光伏系统中的光伏组件和光伏方阵。

Ratings电压和电流: Volts: – DC 1000V – 1500V

Amps: – 0.5 – 20A

Standards标准: IEC 60269-1, IEC 60269-6



Glass: GG / AM / AR 220 - 690V / 0.5 - 125A

Sizes: 8x31, 10x38, 14x51, 22x58

Description: Cylindrical fuse-links for domestic and industrial protection.

Ratings电压和电流:

Volts: – AC 220 – 690V

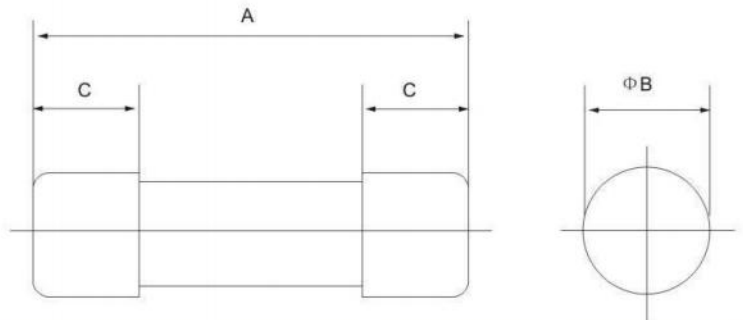
Amps: – 0.5A – 125A

Applications: Protection of power lines, heating circuits, lighting circuits, electrical appliances and electricity meters.

工业或家庭用, 保护电路、加热设备、照明、仪器、仪表。

Standards标准: IEC 60269-1, IEC 60269-3

安装尺寸 Dimensions in mm



Size	A	B	C
8 x 31	31.5	8.5	6.3
10 x 38	38	10.3	10
14 x 51	51	14.3	13
22 x 58	58	22.2	16

Size	Current rating (A)	Package pcs/box
8 x 31	0.5, 1, 2, 4, 6, 8, 10, 12, 16, 20, 25	10
10 x 38	0.5, 1, 2, 4, 6, 8, 10, 12, 16, 20, 25, 32	10
14 x 51	2, 4, 6, 8, 10, 12, 16, 20, 25, 32, 40, 50, 63	10
22 x 58	2, 4, 6, 8, 10, 12, 16, 20, 25, 32, 40, 50, 63, 80, 100, 125	10



## D Fuse-links

Description: D fuse, gG range, for industrial and domestic protection.

Ratings: Volts: – 500V ac、– 2 – 100A

Applications: Protection of electrical distribution circuits and electrical appliances.

Standard: IEC 60269-3, IEC 0636

D 型熔断器，用于工业或家庭中的电器保护。

Size	Thread	Current (A)	Voltage (V)	I <sub>r</sub> (kA)	Unit Packing
D I	E16	2,4,6 10,16 20,25	500	100	20
D II	E27	2,4,6 10,16 20,25	500	100	20
D III	E33	32,35,40 10,50,63	500	100	20
D IV	R1 1/4"	80,100	500	100	10
D V	R2"	125,160,200	500	100	6



## D Fuse-holders D型熔断器底座

Fuse-holders use with DII or DIII fuse-links

Size	I <sub>n</sub> (A)	U <sub>n</sub> (V)	Screw	Weight(g)	Packing(pcs)
D II	25	500	E27	160	120
D II	63	500	E33	265	80
D II	25	500	E27	605	30
D III	63	500	E33	860	20
D II	25	500	E27	400	50
D III	63	500	E33	500	40

## Fuse-links with Bolted Connections 螺栓连接式熔断器

### INDUSTRIAL FUSE-LINKS WITH BOLTED CONNECTIONS



Type "N" & "T" fuse-links are for use in industrial installations and can be fitted into BS88 bolted fuse-holders and distribution fusegear. The range includes all BS88:Part 2 reference fuse-links up to 800 Amps and has gG classification. Many non-reference tag variants are available to cater for installation in non-standard or specialised equipment.

The range has a rated voltage of 415V a.c. The range also has a rating of 250V d.c. A complementary range of solid/neutral links is available to suit our fuse-link range.

#### Product Detail

Product detail - Offset Tag Fuse-Links

List Reference	Current Rating (A)	Bs88 Reference	Voltage Rating (V)	Breaking Capacity (kA)	BS Standard	IEC Standard
NIT	2,4,6,10,16,20,25,32	A1				
TIA	2,4,6,10,16,20,25,32	A2				
TIS	35,40,50,63	A3				
TIS	80,100,125	A3				
TCP	6,10,16,	A4	415a.c	80kA-a.c	BS88: Part 2	60269-2
TCP	40,50,63,80,100	A4	240d.c.			
TFP	125,160,200	(as A4)				
85TM	200,250,315,355,400	-				
86TT	450,500,560,630	-				
86TT	670,710,750,800	-				

Product detail - Central Tag Fuse-Links

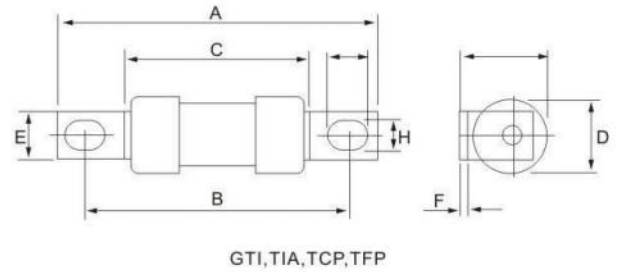
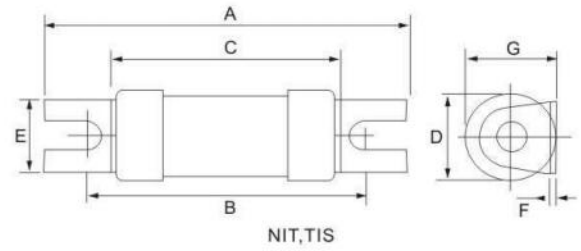
List Reference	Current Rating (A)	Bs88 Reference	Voltage Rating (V)	Breaking Capacity (kA)	BS Standard	IEC Standard
TB	2,4,6,10,16,20,25	-				
TB	32,35,40,50,63	-				
TBC	2,4,6,10,16,20,25	(as B1)				
TBC	32,35,40,50,63	(as B1)				
TC	80,100	B1				
TF	125,160,200	B2				
84TF	10,100,125,160,200	-				
TKF	250,315	B3				
84TK	250,315	-	415a.c	80kA-a.c	BS88: Part 2	60269-2
TK	125,160,200,250,315	-				
TMF	315,355,400	B4				
TM	250,315,355,400	C1				
TMT	355,400	-				
TTM	450,500,560,630	C2				
TT	450,500,560,630	-				
TLM	670,710,750,800	C3				
TLT	670,710,750,800	-				
TLU	450,500,560,630	D1				



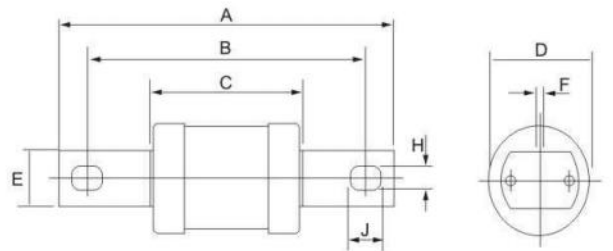
# Fuse-links with Bolted Connections 螺栓连接式熔断器

## Industrial Fuse-links With Bolted Connections

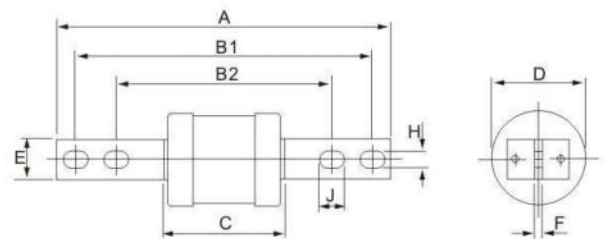
BS88	Type	Current Ratings	Dimensions (mm)								
			A	B	C	D	E	F	G	H	J
Ref.	Ref.	(A)	max	max	max	max	nom	nom	nom	nom	max
A1	NIT	2, 4, 6, 10, 16 20, 25, 32	55	44	33	13.8	11.2	1.0	14.3	-	-
A2	GTIA	2, 4, 6, 10, 16 20, 25, 32	86	73	34	14.3	11.2	1.2	16	5.5	8.0
A2	TIA	2, 4, 6, 10, 16 20, 25, 32	86	73.0	52	22.0	9	1.2	24	5.5	8
A3	TIS	16, 20, 25, 32 40, 50, 63	89	73.0	51	22.0	13	1.2	24	-	-
A4	TCP	63, 80, 100	110	94.0	66	27.0	19	2.4	29	8.7	11
as A4	TFP	125, 160, 200	110	94.0	66	27.0	19	2.4	38	8.7	11



BS88	Type	Current Ratings	Dimensions (mm)							
			A	B	C	D	E	F	J	H
Ref.		(A)	max	max	max	max	nom	nom	nom	nom
	TB	2, 4, 6, 10, 16, 20 25, 32, 40, 50, 63	111	97	45	22	13	97	13	7.1
as B1	TBC	2, 4, 6, 10, 16, 20 25, 32, 40, 50, 63	137	111	45	22	15	111	14	8.7
B2	TC	32, 40, 50, 63 80, 100	137	111	45	26	19	111	14	8.7
B2	TF	125, 160, 200	137	111	45	35	19	111	14	8.7
B3	TKF	250, 315	137	111	45	41	25	111	14	8.7
	TKM	125, 160, 200 250, 315	159	133	45	41	25	133	14	10.3
B4	TMF	315, 355, 400	137	111	52	51	25	111	16	8.7



BS88	Type	Current Ratings	Dimensions (mm)								
			A	B	C	D	E	F	G	H	J
Ref.	Ref.	(A)	max	max	max	max	nom	nom	nom	nom	max
C1	TM	250, 315, 355, 400	210	184	133	52	51	26	6.3	16	10.3
-	TMT	355, 400	267	229	165	52	61	26	6.3	16	10.3
C2	TTM	400, 500, 630	210	184	133	54	61	26	7.8	16	10.3
-	TT	400, 500, 630	267	229	165	54	61	26	7.8	16	10.3
C3	TLM	630, 800	210	184	133	56	73	26	9.5	16	10.3
-	TLT	500, 630, 800	267	229	165	56	73	26	9.5	16	10.3



## Fuse-links with Bolted Connections 螺栓连接式熔断器



### Offset Blade Tags

Applications: The fuse-links for use in single or three phase commercial and industrial installations and can be fitted to BS 88 bladed type fuse-holders and distribution fuse gear.

Utilisation category: gG

Rating:

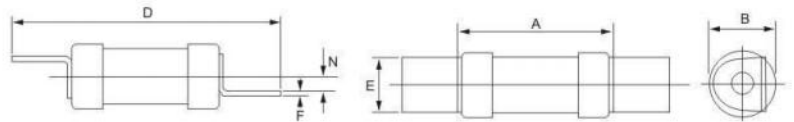
Volts: – ac 240V/415V

Amps: – 2 – 63A

Ir: – 33kA@240V ac, – 80kA@415V ac

Standard: IEC 60269-2, BS 88: part 6

### 安装尺寸 Dimensions in mm



Type Ref.	Rated Voltage (V AC)	Current Ratings (A)	Unit packing	Dimension(mm)					
				A max	B max	D max	E mom	F mom	N mom
NS	240/415	2, 4, 6, 10, 16 20, 25, 32	20	35.5	14.3	62	11	1.0	3.5
ES	240/415	10, 16, 20 25, 32 40, 50, 63	20	39	17.5	69	14.5	1.3	3.5



### HOUSE SERVICE CUT-OUT FUSE-LINKS

Description: Cylindrical fuse-links for electrical utilities to BS Standard

Rating:

Volts: – 415V

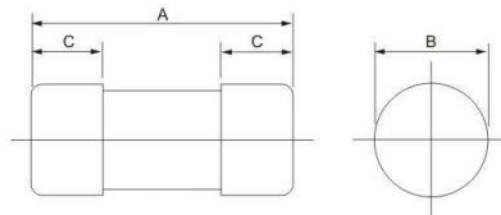
Amps: – 5 – 100A

Ir: – 33kA@415V

Applications: Fuses to sue in connection with House Service Cut-outs.

Standard: BS 1361, IEC 60269-3

### 安装尺寸 Dimensions in mm



Type Reference	Dimensions in mm		
	A	B	C
ME	57	22.23	16
MF	57	30.16	16

Bs1361 Type	Current Rating (A)	List Reference	Unit Packing
II a	5(6), 10 15(16), 20, 25 30(32), 40, 45, 50 60(63), 80, 100	ME5 (6), ME10 ME15 (16) ME20, ME25 ME30 (32) ME40, ME45 ME50 ME60 (63) ME80, ME100	10
II b	20, 30(32) 40, 45, 50 60(63), 80, 100	MF	10



## TYPE J FUSE-LINKS

Description: Slotted type fuses designed for use with wedge type fuse carriers on BS applications.

Ratings:

Volts: – 415V

Amps: – 20– 400A

Ir: – 80kA@415V

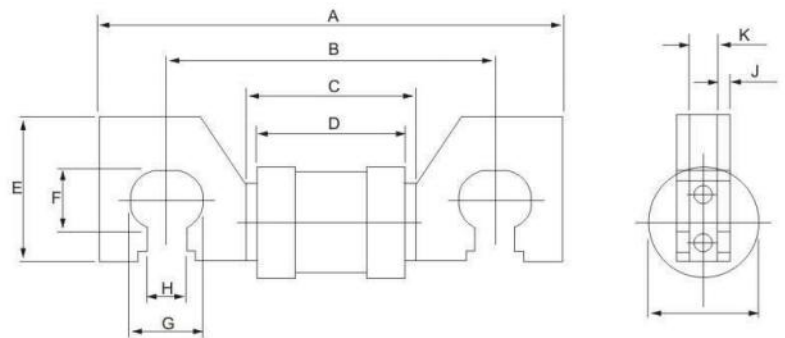
Standard: BS88: Part 5

Applications: Type J fuse-links for use in a.c. electrical supply networks. They are installed in distribution boards, feeder pillars, link boxes, pole mounted cut-outs and heavy duty service intakes.



Rating (A)	Slotted Fixing Center	
	82mm	92mm
20	JPU (20MJ30-7)	JSU (20MJ31-7)
25	JPU (25MJ30-7)	JSU (25MJ31-7)
32	JPU (32MJ30-7)	JSU (32MJ31-7)
40	JPU (40MJ30-7)	JSU (40MJ31-7)
50	JPU (50MJ30-7)	JSU (50MJ31-7)
63	JPU (63MJ30-7)	JSU (63MJ31-7)
80	JPU (80MJ30-7)	JSU (80MJ31-7)
100	JPU (100MJ30-7)	JSU (100MJ31-7)
125	JPU (125MJ30-7)	JSU (125MJ31-7)
160	JPU (160MJ30-7)	JSU (160MJ31-7)
200	JPU (200MJ30-7)	JSU (200MJ31-7)
250	JPU (250MJ30-7)	JSU (250MJ31-7)
315	JPU (315MJ30-7)	JSU (315MJ31-7)
355	JPU (355MJ30-7)	JSU (355MJ31-7)
400	JPU (400MJ30-7)	JSU (400MJ31-7)

### 安装尺寸 Dimensions in mm



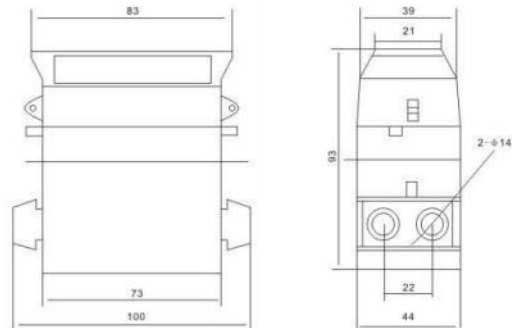
Type	Current	A	B	C	D	E	F	G	H	I	J	K
MJ30-7	Up to 200A	110	82	45.	40.	30	14.	17.	9.8	30.	2.4	6.45/6.53
MJ30-7	250-400A	110	82	45.	40.	30	14.	17.	9.8	38	2.4	6.45/6.53
MJ31-7	Up to 400A	131	92	47	41	38	17.	20.	10.	38	3.2	8.05/8.73

## House Service Cut-outs

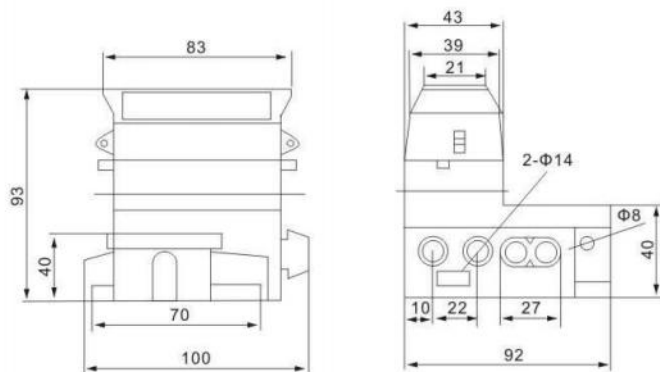
- Accepts fuse links in accordance with BS 1361:1991
- Maximum rating type IIa fuse 60/80A
- Maximum rating type IIb fuse 100A
- Non interchangeable solid link disconnecter available
- Tested and approved to BS 7657:1993
- Moulded in light grey glass reinforced polyester DMCThermoset material
- Solid brass terminal blocks with serrated bores and two hexagon drive terminal pinching screws per conductor
- Two incoming and outgoing terminals
- Shielded incoming and outgoing phase protection
- Accepts conductor up to 35MM<sup>2</sup>
- Reversible mounting
- Sealing wire facility
- Busbar facility to interconnect cut-outs
- SP can be sued in conjunction with CNE cut-out to form TPNE set
- Unused cable entry sealing plugs supplied
- Switch wire provision on neutral/earth block
- Separate cable cover or sealing chamber Safety interlocked mouldings  
No cover mouldings can be removed until fuse carrier or solid link in withdrawn.



## 安装尺寸 Dimensions in mm



60/80A&100A



60/80A/100A

Description	60/80A	100A
Single pole cut-out	Used with fuse-link 22x57	Used with fuse-link 30x57
Single Pole and Neutral	Used with fuse-link 22x57	Used with fuse-link 30x57

## Heavy Duty Cut-Outs J型熔断器底座

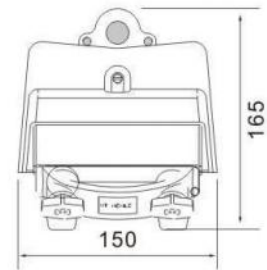


### Compact, Single pole Overhead Cut-out 400A Rating

- Compact design for optimised mounting arrangements
- Mechanical terminals require no additional lugs
- Shear bolts—needs no special tools
- Accepts aluminium and copper conductors between 70 and 300mm<sup>2</sup>
- Designed for IP43 rating and performance compliance with BS7656:1993

Product code	Description
54611-12	compact 400A cut-out with M12 coach screw
58424-06	Spare fuse carrier
54614-18	spare terminal assembly kit left and right hand
54614-11	Conversion kit 25/35mm <sup>2</sup> copper or aluminium

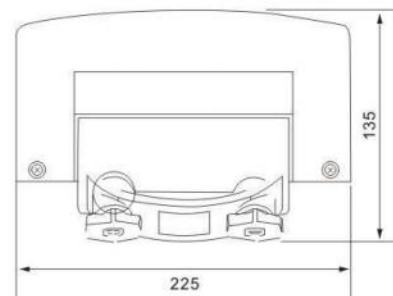
### 安装尺寸 Dimensions in mm



### Compact, Single pole Overhead Cut-out 400A Rating 400A Pole Mounted Fused Cut-Out

The fuse carrier accepts 'J' type fuses to BS88 rated up to 400A. The terminals will accept solid or stranded aluminium and solid copper conductors in the range 70 to 300mm<sup>2</sup>. An adaptor is available for 25/35mm<sup>2</sup> copper or aluminium conductors. With the PVC cable sealing grommets in place the cut-out is IP43 rated and has been designed to fully comply with the performance requirements specified in BS7656:1993 for LV pole mounting fuses.

### 安装尺寸 Dimensions in mm





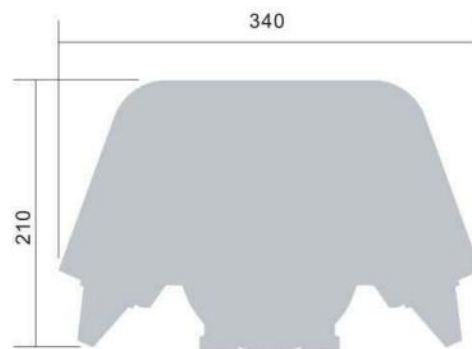
## Heavy Duty Cut-Outs J型熔断器底座



### 400A Pole Mounted Fused Cut-Out

- Accepts BS 88 J type fuse links
- Maximum rating 400A
- Fuse carrier with 83mm centers
- Moulded in grey glass reinforced polyester DMC
- Fuse contacts and cable terminal plates manufactured from copper tinned
- Cable entry and exits through PVC grommet
- Maximum cable size 300mm<sup>2</sup>
- M12 studs with nuts and washers for the reception of cable socket

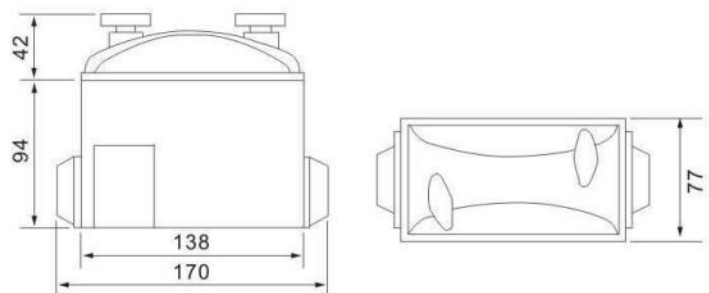
### 安装尺寸 Dimensions in mm



### HDCO Heavy Duty Cut-Out

- Accepts BS 88 J type fuse links
- Maximum rating 300A
- Fuse carrier with 83mm centers
- Moulded in white glass filled polyester thermoset material
- All contacts manufactured from solid brass
- Cable entry and exits through PVC grommet
- Maximum cable size 185mm<sup>2</sup>
- Refer to rage 14 for fuse bases, contacts and fuse handles

### 安装尺寸 Dimensions in mm





### Insulated Single Pole Three Phase & Neutral GF

- Moulded in light grey glass reinforced polyester DMC
- 200A rating
- Accepts J type fuse link on phases
- Fuse carriers with 82 mm centers
- Lift off cover with security sealing facilities
- Two part detachable cable trough
- Cable size: 120mm<sup>2</sup>
- Three cable entry positions by either brass gland or PVC grommet
- Cable exit by wooden or closed cell foam cable bush
- Available with shear head mechanical connectors on incoming or outgoing terminals
- Variable neutral/earth terminations solutions to suit specifiers' requirements
- Incoming connections can be insulated/shrouded whilst outgoing connections are being terminated
- Suitable for both PME and SNE applications
- Cable entry and exits through PVC grommet
- Maximum cable size 185mm<sup>2</sup>
- Refer to page 14 for fuse bases, contacts and fuse handles



### HDCO Heavy Duty Cut-out

- Accepts BS 88 J type fuse links
- Maximum rating 630A
- Fuse carrier with 92mm centers
- Moulded in grey glass reinforced polyester DMC
- Each phase fully insulated with separate lid
- Wooden battens pre-drilled for wall mounting
- Single phase or three phase versions available
- Maximum cable size 2 X 300mm<sup>2</sup>
- Cable entry and exits through PVC grommet
- All cable terminations manufactured in hard drawn copper
- Copper neutral link secured by bolts
- Incoming connections can be insulated whilst terminating outgoing connections

# BS88 Fuse Holders HRC 熔断器底座

## BS88 Fuse Holders

Description: Fully shrouded fuse bases with unique cam action system for BS88 Fuse-link applications, used with Fuse-links such as NIT, TIA, TIS, TCP and TF.

Ratings:

Volts: – 500V ac

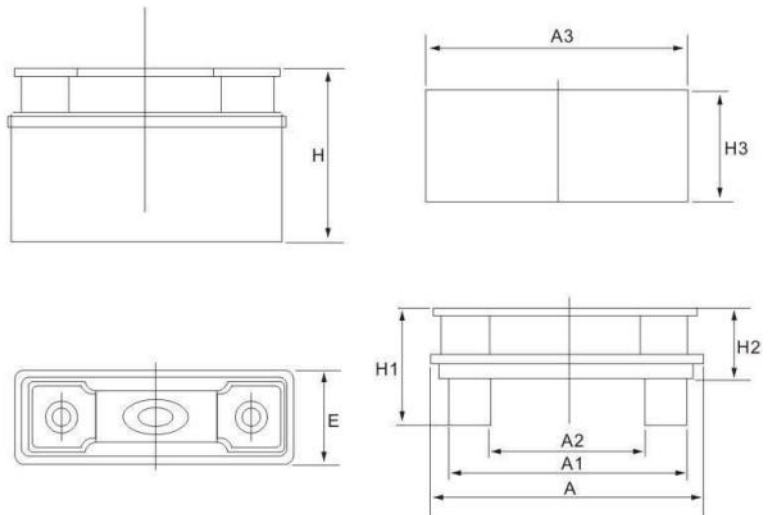
Amps: – 32, 63, 100 and 200A

Applications: Lighting and heating equipment, circuit protection, Motor Protection, Control equipment circuit protection

Standard: IEC 60269



### 安装尺寸 Dimensions in mm



Part No.	Dimensions(mm)								
	A	A1	A2	A3	E	H	H1	H2	H3
RG-32	68	57	38	68	26	49	35	19	26
RG-63	105	92	60	105	37	67	48	25	37
RG-100	129	114	72	129	49	94	75	40	49
RG-200	178	146	74	178	71	128	109	71	71

Part.No.	Rated Current	Used with Fuse-link
RG-32	32A	NIT
RG-63	63A	TIS/TIA
RG-100	100A	TCP
RG-200	200A	TF





**Connection Box**

Voltage: 250V  
 Current: 60A  
 "U" brass part available  
 Voltage: 250V  
 Current: 80A  
 Voltage: 250V  
 Current: 100A  
 "L" brass part available

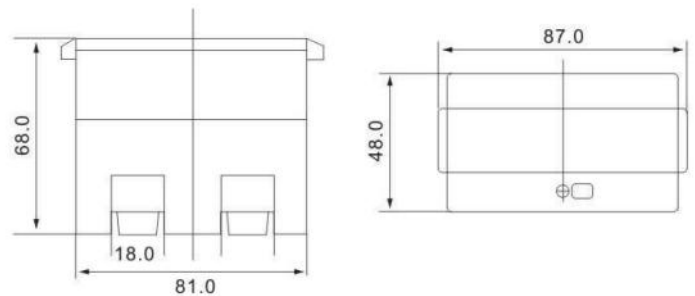
**安装尺寸 Dimensions in mm**



**Fuse Cut-out**

Use with cylindrical fuse-link 22X57  
 Voltage: 250V  
 Current: up to 60A  
 Use with cylindrical fuse-link 22X57  
 Voltage: 250V  
 Current: up to 60A

**安装尺寸 Dimensions in mm**



# Expulsion Fuse Element K Type 高压熔丝

## Expulsion Fuse Element



Expulsion fuse Element is suitable for outdoor distribution Cutouts, for pole mounting, for complete drop-out single vented expulsion fuse-link assemblies. Intended for overload/short-circuit protection of for disconnection of distribution equipment or parts of a reticulation system operating at a nominal voltage of 11kV or 33kV and at mid Africa service conditions.

Earthed three Phase system

50 Hz  $\pm$  2%

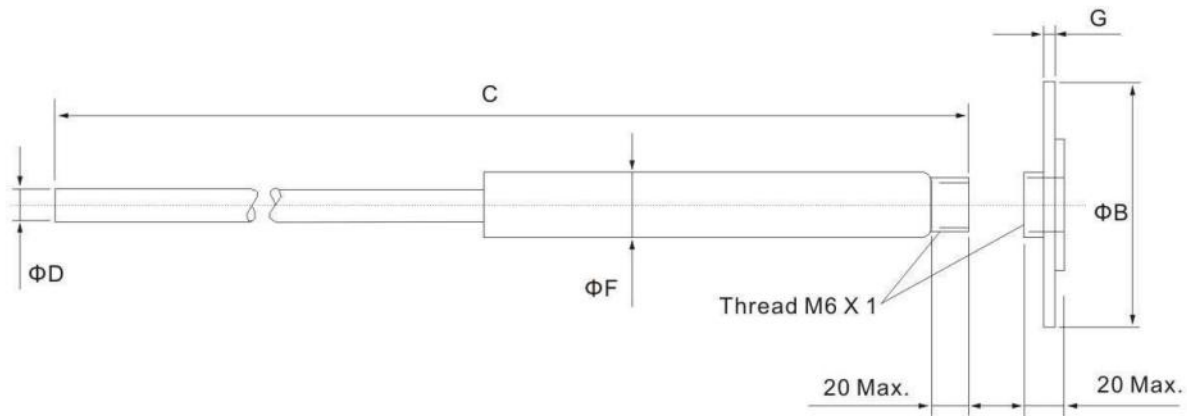
Highest system voltage 12kV and 36kV respectively

Lightning impulse withstand 95kV and 170kV peak for the 12 and 36kV respectively.

Ambient temperature: -5°C up to 50°C.

Standard: IEC 60282

## 安装尺寸 Dimensions in mm



Current	Dimensions in mm						Dmax	Fmax
	A	B	C					
			11KV	24KV	33KV			
10-40A	12.5 $\pm$ 0.2	19.0 $\pm$ 0.2	585	650	787	2.0	6.5	
30-40A	12.5 $\pm$ 0.2	19.0 $\pm$ 0.2	585	650	787	3.0	8.0	
50-500A	19.0 $\pm$ 0.3	Not applicable	585	650	787	5.0	10.0	
140-200A	19.0 $\pm$ 0.3	Not applicable	585	650	787	7.0	12.0	

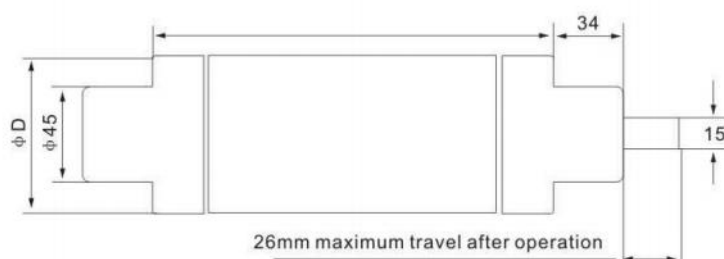
## Medium Voltage Fuse-Links

Comply with IEC 60282-1, IEC 60549, BS 5907 Available in DIN 43625 and BS 2692 dimensions Available in insert installation and busbar installation Voltage range: 3.6kV, 7.2kV, 12kV, 15.5kV, 24kV & 36kV

Part Number	Voltage Rating Vn kV	Current Rating In A	Breaking Capacity I1 kA	Lth. mm	Dia. mm	Wt. kg
12SDLSJ6.3	12	6.3	50	292	51	1.6
12SDLSJ10	12	10	50	292	51	1.6
12SDLSJ16	12	16	50	292	51	1.6
12SDLSJ20	12	20	50	292	51	1.6
12SDLSJ25	12	25	50	292	51	1.6
12SDLSJ31.5	12	31.5	50	292	51	1.6
12SDLSJ40	12	40	50	292	51	1.6
12SDLSJ50	12	50	50	292	51	1.6
12SDLSJ63	12	63	50	292	76	3.1
12SFLSJ50	12	50	50	292	76	3.1
12SFLSJ63	12	63	50	292	76	3.1
12SFLSJ80	12	80	50	292	76	3.1
12SFLSJ100	12	100	50	292	76	3.1
12SFLSJ125	12	125	50	292	76	3.1
12SFLSJ160	12	160	63	292	88	3.7
12SFLSJ200	12	200	63	292	88	3.7
24SDMSJ6.3	24	6.3	50	442	51	2.2
24SDMSJ10	24	10	50	442	51	2.2
24SDMSJ16	24	16	50	442	51	2.2
24SDMSJ20	24	20	50	442	51	2.2
24SDMSJ25	24	25	50	442	51	2.2
24SDMSJ31.5	24	31.5	50	442	51	2.2
24SDMSJ40	24	40	50	442	51	2.2
24SDMSJ40	24	40	50	442	76	4.5
24SDMSJ50	24	50	50	442	76	4.5
24SDMSJ63	24	63	50	442	76	4.5
24SDMSJ80	24	80	50	442	76	4.5
24SDMSJ100	24	100	63	442	76	4.5
24SDMSJ125	24	125	63	442	76	4.5
24SDMSJ160	24	160	63	442	76	4.5
24SDMSJ200	24	200	63	442	88	5.6
36SDQSJ3.15	36	3.15	20	537	51	2.9
36SDQSJ6.3	36	6.3	35.5	537	51	2.9
36SDQSJ10	36	10	35.5	537	51	2.9
36SDQSJ16	36	16	35.5	537	51	2.9
36SDQSJ20	36	20	35.5	537	51	2.9
36SDQSJ25	36	25	35.5	537	51	2.9
36SDQSJ31.5	36	31.5	35.5	537	76	6
36SDQSJ40	36	40	35.5	537	76	6
36SDQSJ50	36	50	35.5	537	76	6
36SDQSJ63	36	63	20	537	88	6.5



### 安装尺寸 Dimensions in mm

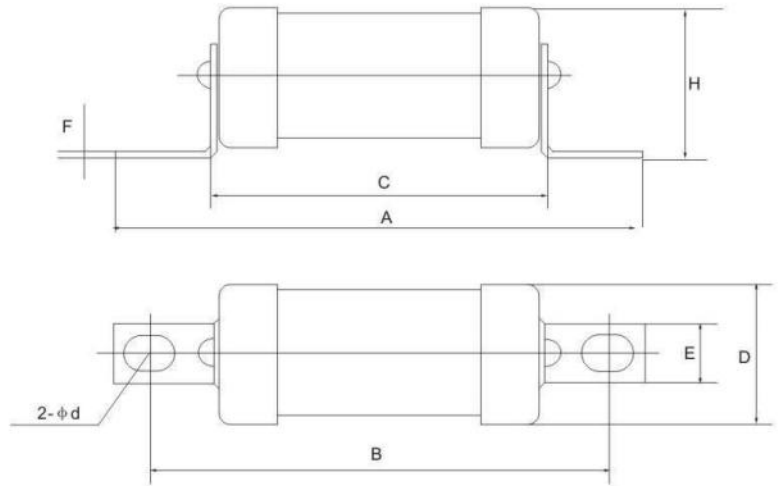




# Fuse-links with Bolted Connections 螺栓连接式快速熔断器



安装尺寸 Dimensions in mm



规格 Type	尺寸 Dimensions(mm)					
	A	B	C	D	E	F
RGS11	55	40	25	12.5	8.5×6	1.5
RGS4	77	62.5	47	12.5	8.5×6	1.5
RGS44	93	71	46	32	12×8.8	1.5
RGS4A	96	74	50	19	13.6×8.6	3
RGS4B	107	80	51	25	16×10	3

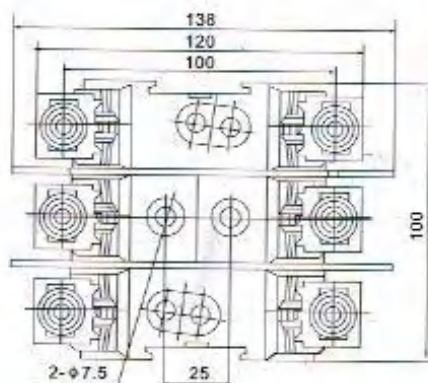
## HRC Low voltage fuses square type NT/NH 3P 底座

### NT00/NH00 3P底座

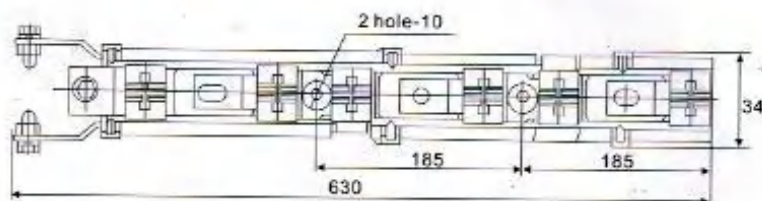
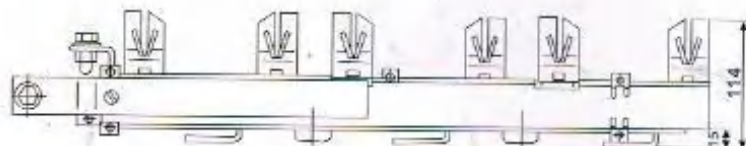
本系列熔断器底座由高强度瓷底板/耐高温树脂底板、楔形静触头组合而成，呈敞开式结构。产品具有散热条件好、机械强度高、接触可靠、操作方便等特点，能配装所有符合000-4相应尺码的熔断体。

The bases are made up of high-density ceramic, heat-resistant resin board and wedge-shaped static contacts in an open structure. The product is featured with good heat sinking, high mechanical strength, reliable connection and simple operation. It is available for all NH000-NH4 fuses.

### 安装尺寸 Dimensions in mm



### NT2/NH2 条形熔断器底座



### NT2条形熔断器底座

NT2条形熔断器底座适用于交流50(60)Hz, 额定电压至690V, 额定电流至400A, 100mm或185mm母线系统。作为电路的过载及短路保护之用

NT2条形熔断器底座广泛应用于箱变、电缆分支箱

NT2条形熔断器底座符合GB13539.2, GB14048.3, IEC60269.2, IEC60947.3标准

### Scope of application

DNTRS bar fuse holder used in AC 50(60) Hz 100mm or 185mm busbar system with rated voltage up to 690V and rated current up to 630A, it is mainly used for overload and short circuit protection of circuit.

DNTRS bar fuse holder has been widely used for box transformer and cable branch box.

DNTRS bar fuse holder complies with standard of GB13539.2 IEC60269.2 and IEC60947.3

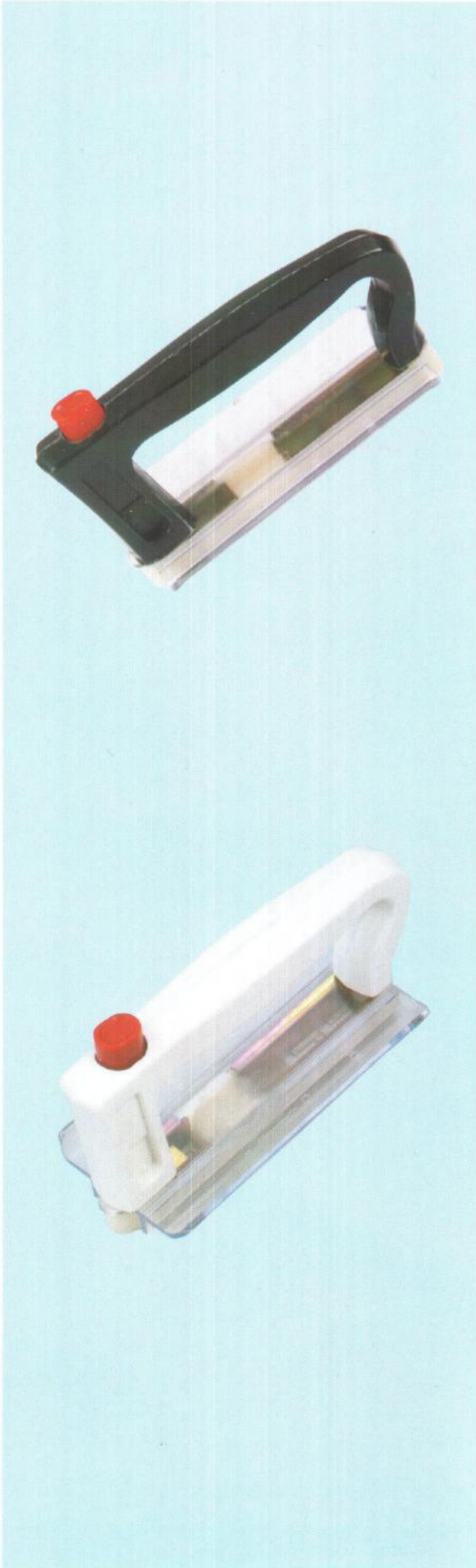


## HRC Low voltage fuses square type NT/NH底座

### NT/NH 熔断器手柄

载熔件由搭扣、按钮、挡板、手柄等组成，搭扣分三档尺寸，分别载扣000-00、0-3、4三种尺码段的熔断体

The fuse carrier is made up of catching holes, push button, guard board and handle. There are three positions for the catching holes, for NH000-NH00, NH0-NH3, and NH4 fuses.



### 安装尺寸 Dimensions in mm

